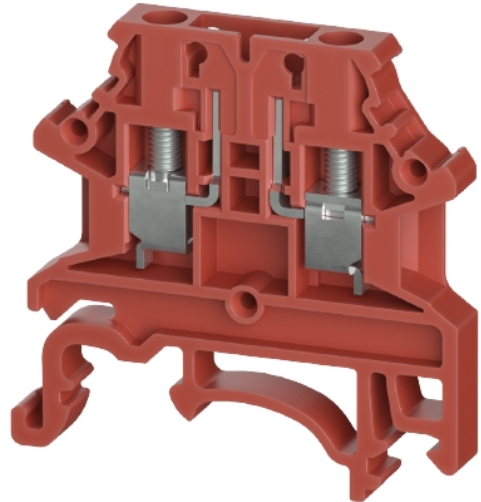


Data sheet

Commercial Art.No.: 5D.S03.4155.5

cutting clamp WTN 2.5 TK RT

cutting clamp WTN 2.5 TK RT rated voltage 400 V, rated current 24 A, screw connection, number of levels 1, number of clamp positions per level 2, nominal cross section 2.5 mm², connectable conductor cross section fine stranded without cable end sleeve 0,34mm² - 2,5mm², mounting method DIN rail (top hat rail), color red, width/grid dimension 5.1 mm, inflammability class of insulation material acc. with ul94 V0



Commercial Art.No.	5D.S03.4155.5
EAN	4049088724503
Order Unit	100

certificates / approvals



Technical data

general

nominal cross section	2.5 mm ²
color	red
number of levels	1
number of clamp positions per level	2
width/grid dimension	5.1 mm
insulating housing	PA
inflammability class of insulation material acc. with UL94	V0
mounting method	DIN rail (top hat rail)

technical data

rated current	24 A
rated voltage	400 V
rated impulse voltage	6 kV
pollution degree	3
closing plate required	yes
type of insulation material	thermoplastic
length	40.7 mm
width	5.1 mm

connection data

connection type	screw connection
connection type 1	screw connection

minimum cross section solid	0.34 mm ²
maximum cross section solid	2.5 mm ²
minimum cross section fine stranded	0.34 mm ²
maximum cross section fine stranded	2.5 mm ²
minumum conductor cross section (flex., stranded) with cable end sleeve	0.25 mm ²
maximum conductor cross section (flex., stranded) with cable end sleeve	2.5 mm ²
wire strip length	10 mm
torque conductor mounting	0.4 Nm

technical data UL/CSA

cross section UL	22-12 AWG
voltage UL	300 V
current factory wiring	20 A
current field wiring	20 A
cross section CSA	22-12 AWG
voltage CSA	300 V
current CSA	20 A

classification

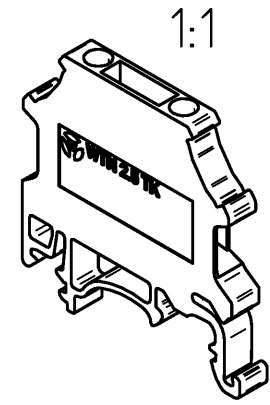
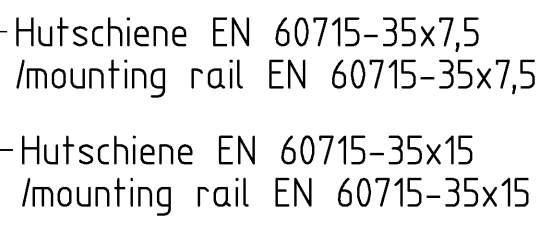
ETIM 9.0	EC000902
----------	----------

product compliance

REACH-SVHC conformity status	compliant
------------------------------	-----------

Accessories

Commercial Art.No.:	Article-type description:	Description:
0D.S04.2055.0	end plate APWTN 2.5/4	
0D.202.7281.0	marking strips WML 9.8/60	marking strips WML 9.8/60 color white
0D.203.7056.0	marking plate WMP 5,10-10	marking plate WMP 5,10-10 modular spacing 5.1 mm, color white



2025-11-17 14:32:15	1.000	2	3	4	5	6	01-QU-RD-32/21
---------------------	-------	---	---	---	---	---	----------------